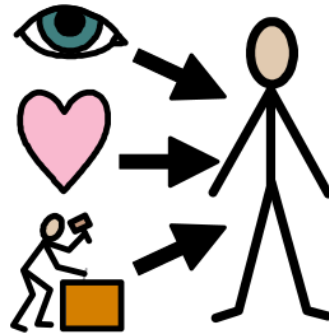




Work



Experience

For Employers wanting to offer work experience opportunities for Strathmore Learners

14-19.

Firstly, we are delighted that you're interested in offering work experience to our learners with Severe Learning Difficulties. We know this can be a daunting thought when you do not know the learners and their needs but the benefits in including our learners in your working environments will promote diversity and inclusion within your workplace and strengthen the local communities understanding of special educational needs.

We offer two types of work experience opportunities for our learners based on year group.

Year 10 and 11 have a 1-week work experience placement which takes place in April soon after the Easter holidays.

Year 12, 13 and 14 will have the opportunity to attend an extended work experience placement which may take place one day a week for a 6,8- or 12-week block.

Our learners will be accompanied by a trained member of school team who will be there to support the learners with the tasks that need to be completed.

Each work experience placement will be personalised to you the employer and the learner attending. This means timings of the day, tasks to complete and the days to attend will vary depending on the placement. Tasks that learners have completed successfully are as follows: gardening, catering, cooking and maintenance tasks.

Preparation before the work experience takes place will occur in the classroom and a brief introduction would take place where the learner and staff member are introduced to your staff and location.

We have procedures and policies in place for liability insurance and AFC can work with us to ensure everyone is insured when completing the experiences.

If you're interested and would like to know more, please contact workexperience@strathmore.org.uk